

COVID-19

HEALTH AND

SAFETY

Mountainview Secondary School



01. ARRIVAL AND DISMISSAL

How will students come and leave school safely?

02. SCHOOL CLASSROOMS

How will children and staff be kept safe in the classroom?

03. LUNCH AND SNACK

What safety measure are being taken for lunch and snack time?

04. SCHOOL NURSES STATION

What is setup at MCS for a nurses station?

05. COMMON AREAS

What measures are being taken to ensure common areas are safe?

06. FACE COVERINGS

What face coverings are required for school?

07. COVID-19 RESPONSE

How will MCS respond to a COVID-19 active case?

08. ADDITIONAL PRECAUTIONS

What additional precautions are being taken to ensure the safety of the students and staff?

01.



ARRIVAL AND DISMISSAL

How students arrive and leave school safely?

ARRIVAL AND DISMISSAL



- All cars entering the campus must stop at the designated drop off points for temperature checks. No one with a temperature above 37.5 will be allowed into school.
- Students will be dropped off at the secondary pavilion(9-12) and the gyms (8-7) at 7:45 AM and walk directly to the sinks in the courtyard or gym. Students will wash their hands then proceed directly to their assigned classroom. Walking students will enter through the gate and follow the walkway to the courtyard to wash their hands before proceeding to their classroom.
- Students will be called to the High School Pavilion area at 12:05 PM when their drivers have arrived.
- Drivers may NOT exit the vehicles.

02.

SCHOOL CLASSROOM



How will children and staff be kept safe in the classroom?

SCHOOL CLASSROOM



- Students and Staff should monitor their temperatures and symptoms daily. Anyone with a fever or symptoms related to COVID-19 should NOT come to school.
- Students and staff will receive COVID-19 training, including how to identify symptoms and reduce transmission by properly washing their hands and wearing face coverings.
- Students and staff members will be reminded throughout the day to practice proper hygiene.
- Hygiene signage is installed at all school sites.
- Random temperature checks of students and staff will be conducted throughout the day.
- Students in grades 7-12 and staff must wear a 3 ply face mask at all times.

SCHOOL CLASSROOM



- Nonessential furniture and equipment will be removed to allow for maximum physical distancing.
- One-way traffic patterns will be in a place where and when feasible.
- Facilities will be cleaned thoroughly and regularly. High-touch areas will be disinfected throughout the day. Deep cleaning will take place when there is a confirmed case.
- The library and computer lab will be closed. Students may check out books by sending an email to Mr. Collins.
- Hand Sanitizer is available in every classroom.
- Students will be physically distanced to the greatest extent possible.
- Students will have assigned classrooms and not be allowed to move about the courtyard or campus. They must stay in their assigned space. Teachers will come to the classroom.

SCHEDULE FOR STUDENTS

This is the schedule for our slow reopen in January

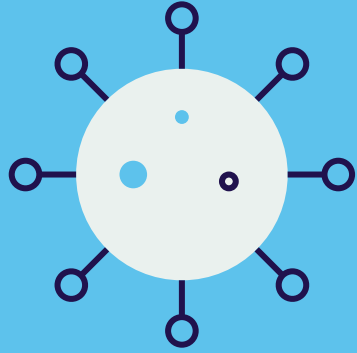


Date	Who is returning
Jan 12	ALL STUDENTS WILL BE ONLINE
Jan 25	GRADES 7-10 WILL RETURN FOR FACE TO FACE

SCHOOL CLASSROOM



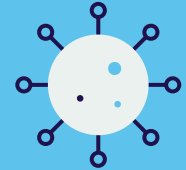
- Classroom assignments:
 - The big gym -7th grade
 - The small gym- 8th grade
 - Room-2- 9th grade
 - Pavillion-10th grade
 - Room-20-11th grade
 - Room 13- 12th grade



03.

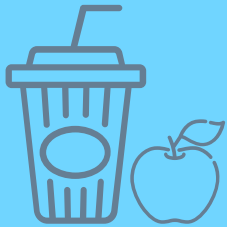


LUNCH AND SNACK



What safety measure are being taken for lunch and snack time?

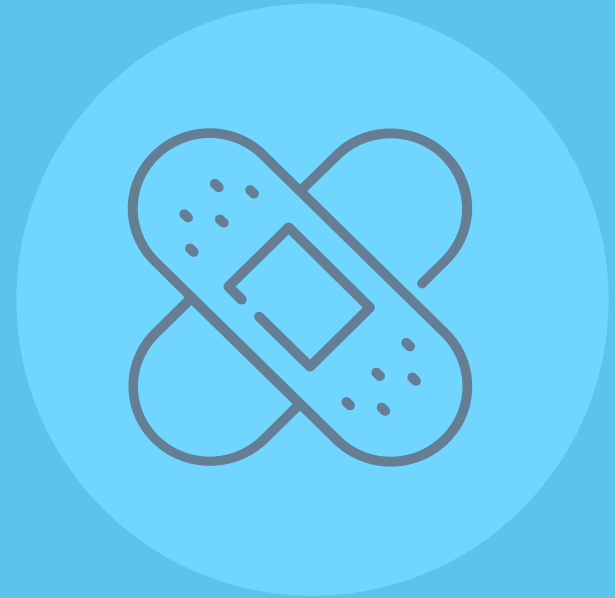
LUNCH AND SNACK



- The government is NOT allowing students to have lunch on campus at this time.
- Students may bring a snack but there will be NO sharing of snacks. Snacks will only be consumed during designated snack times.
- Students should also bring their own water bottles. Dispensers are available and will be sterilized regularly.

04.

SCHOOL NURSE'S STATION



What is setup at MCS for a nurses station?

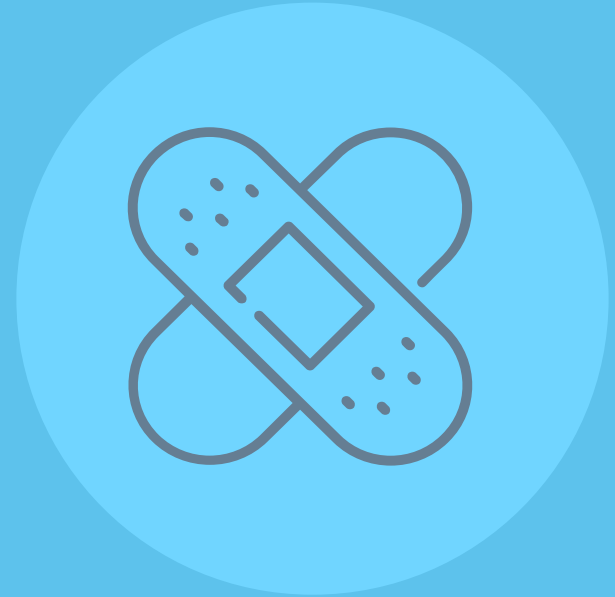
SCHOOL NURSES STATION

- MCS has an isolated room that will be sterilized after use. Should a child become ill, show symptoms, or have a fever they will be moved to the isolation room and parents contacted immediately. Basic first aid items such as bandaids or panadol will be available through our main office.



05.

COMMON AREAS



What measures are being taken to ensure common areas are safe?

COMMON AREAS



- Gyms, pool, fitness room, tracks, playgrounds, and fields are available for signup through the Signup Genius app that Mrs. Dugan sends out every two weeks.
- Physical Education classes are NOT allowed by the government at this time.
- Common areas will be cleaned and disinfected daily.
- High-touch points (light switches, door handles) will be disinfected throughout the day.
- When feasible, these areas will be used as classrooms to maximize physical distancing.

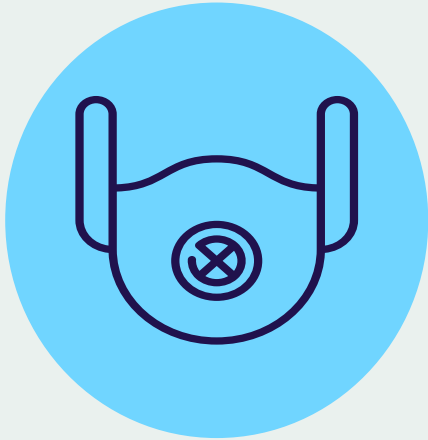
06.

FACE COVERINGS



What face coverings are required for school?

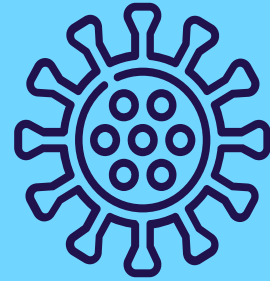
FACE COVERINGS



- Students in grades 7-12 and staff must wear face coverings at all times required by the government.
- Face coverings must cover both the nose and mouth and fit snugly against the face.
- Students and staff may wear face shields in addition to face coverings.
- Face coverings must comply with general dress code and school uniform requirements as well as by a minimum of 3-ply.
- Students and staff will provide their own face coverings.

07.

COVID-19 RESPONSE



How will MCS respond to a COVID-19 active case?



COVID-19 RESPONSE

- Weekly emails will be sent to parents from the principal updating parents on the current situation in the school and community.
- All employees and parents (including those choosing online only) will be notified when there is a confirmed case of COVID-19 that impacts a school. A school is considered to be impacted when even one person (other than the person testing positive) must be quarantined.
- The school principal along with the Leadership Team and the COVID Task force will coordinate on communications and the appropriate response.
- When there is a confirmed case of COVID-19 that impacts a school, parents will be notified via the principal or superintendent. Additional notifications may be sent via the school website. The school principal will work with the Leadership Team to determine the most appropriate and effective communications mediums for each situation.



COVID-19 RESPONSE

- Due to privacy protection policies, we will not be disclosing any personally identifiable information.
- If a student or staff member tests positive then those who have been identified as contacts will self-quarantine. The quarantine should be for 14 days from the last time they were with someone who has COVID-19.
- According to the CDC (Center for Disease Control and Prevention), a contact is a person who:
 - Was exposed to a person with COVID-19 for more than 15 minutes.
 - Was closer than 2 meters apart AND,
 - Was exposed to an ill person up to 2 days before their symptom onset or test collection (if asymptomatic).
 - <https://www.cdc.gov/coronavirus/2019-ncov/if-you-are-sick/quarantine.html>

08.

ADDITIONAL PRECAUTIONS



What additional precautions are being taken to ensure the safety of the students and staff?

ADDITIONAL PRECAUTIONS



- Field trips and large-group gatherings will not be allowed until further notice.
- Visitors on campus must schedule an appointment first. Please contact office@mtview.id
- The school continues to purchase supplies for hand sanitizer, face coverings, and disinfectants, etc.

IF SOMEONE IN YOUR HOME IS SICK

01

Continue to practice everyday preventive actions as usual

02

Keep the ill person in a separate room from others in the household

03

If caring for a sick household member, monitor your own health too

04

Keep surfaces disinfected and also avoid sharing personal items

05

If you become sick, stay in contact with others by phone or email

06

Take care of the emotional health of your household members, including yourself

PHYSICAL DISTANCING



ONE METER



SAFE DISTANCE

Keep at least a distance of 1 meter (3 feet) between yourself and other people

OLDER ADULTS

Try not to come in contact with the elderly, as they are the most vulnerable to the virus

**CLEAN FREQUENTLY
TOUCHED
SURFACES AND
OBJECTS**

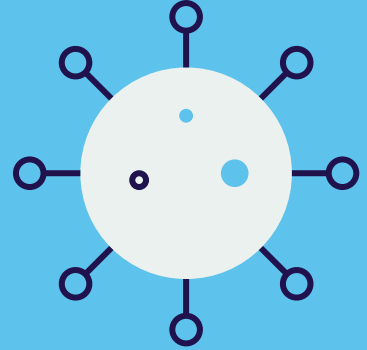




**WE MUST EACH
DO OUR PART**



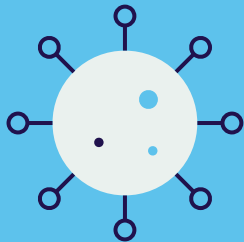
THANKS!



Do you have any questions?

sec_principal@mtivew.id
+628233602833

Mountainview Christian School



CREDITS: This presentation template was created by Slidesgo, including icons by Flaticon, and infographics & images by Freepik